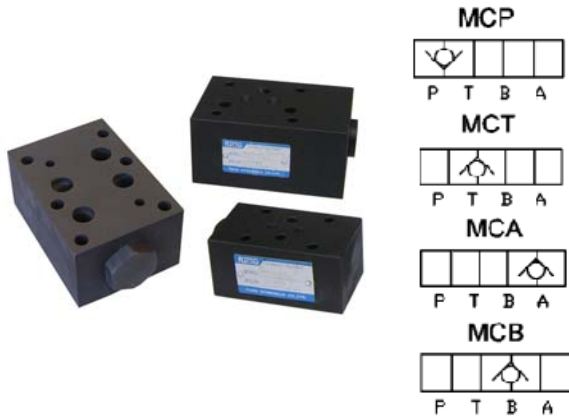


MC\*-02, 03, 04, 06 系列



型號說明

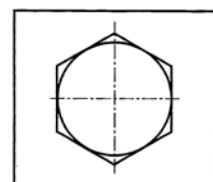
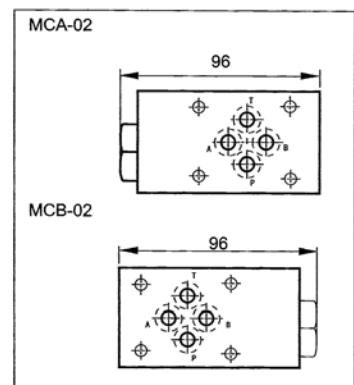
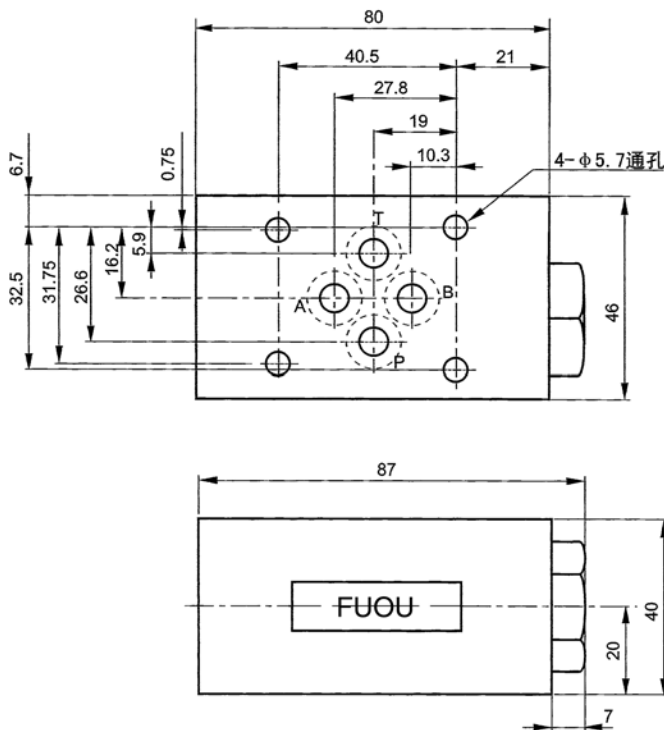
MC	P	-02	A
系列編號	控制油路	規格	開啓壓力
疊加式 單向閥	P: P 油路 A: A 油路 B: B 油路 T: T 油路	02: 1/4 03: 3/8 04: 1/2 06: 3/4	請參照 規格參數表

規格參數表

型號	最高使用壓力 MPa	開啓壓力 MPa	最大流量 L/min	重量 kg
MCP-02	25	A: 0.05 B: 0.35	02: 40 03: 80 04: 150 06: 200	1.0
MCP-03				2.2
MCP-04				4.8
MCP-06				10.5
MCA-02				1.2
MCA-03				2.2
MCB-02				1.2
MCB-03				2.2
MCT-02				1.2
MCT-03				2.2
MCT-04				4.8
MCT-06				10.5

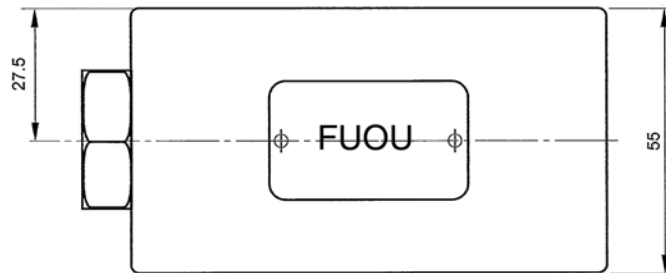
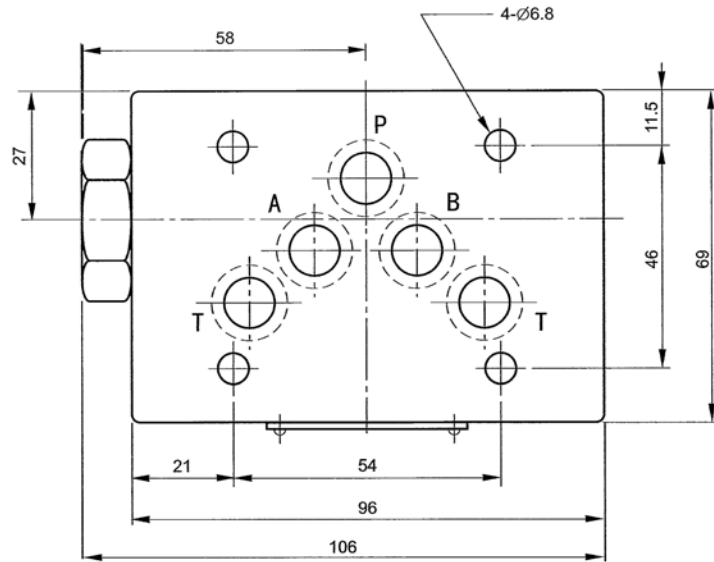
尺寸圖

MCP-02  
MCT-02

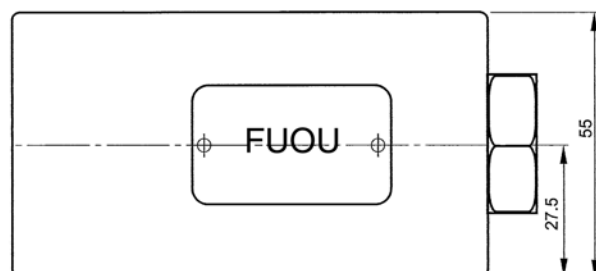
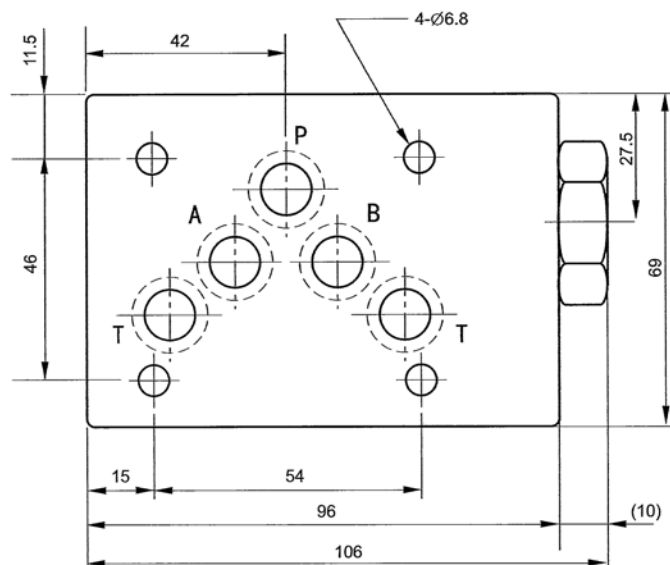


■尺寸圖

**MCP-03-※**  
**MCA-03-※**  
**MCT-03-※**

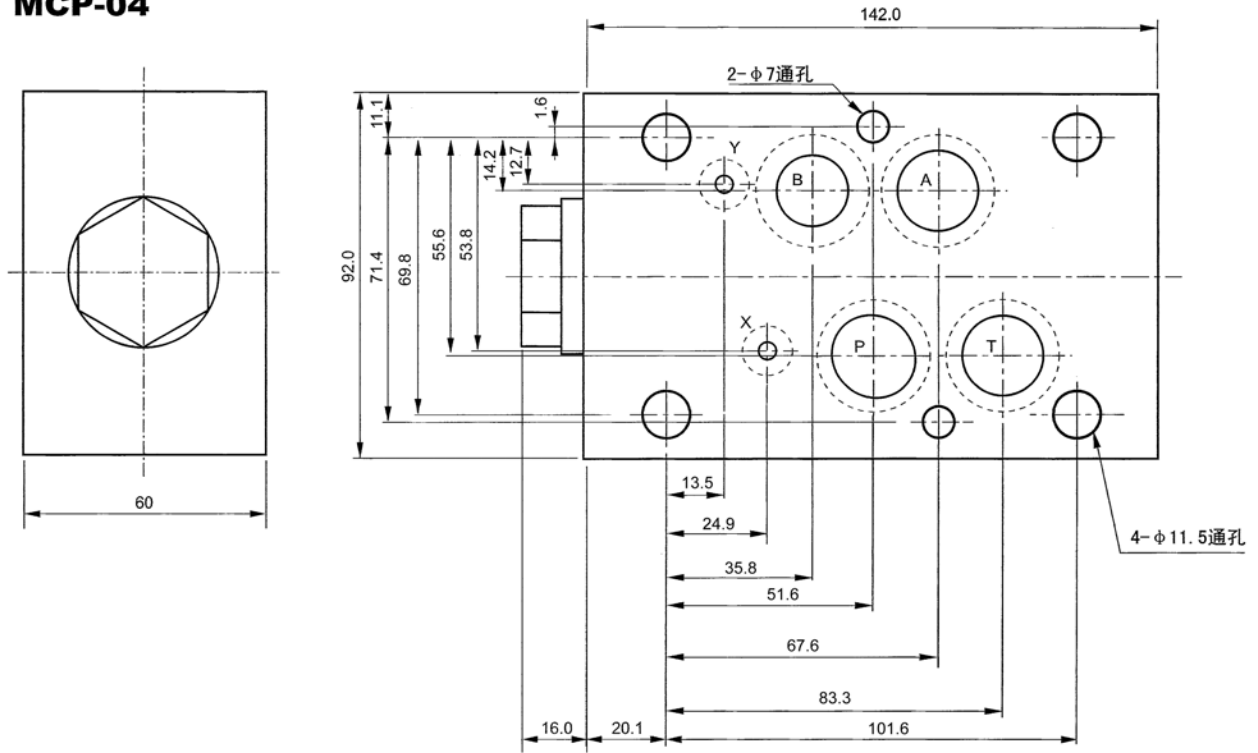


**MCB-03-※**

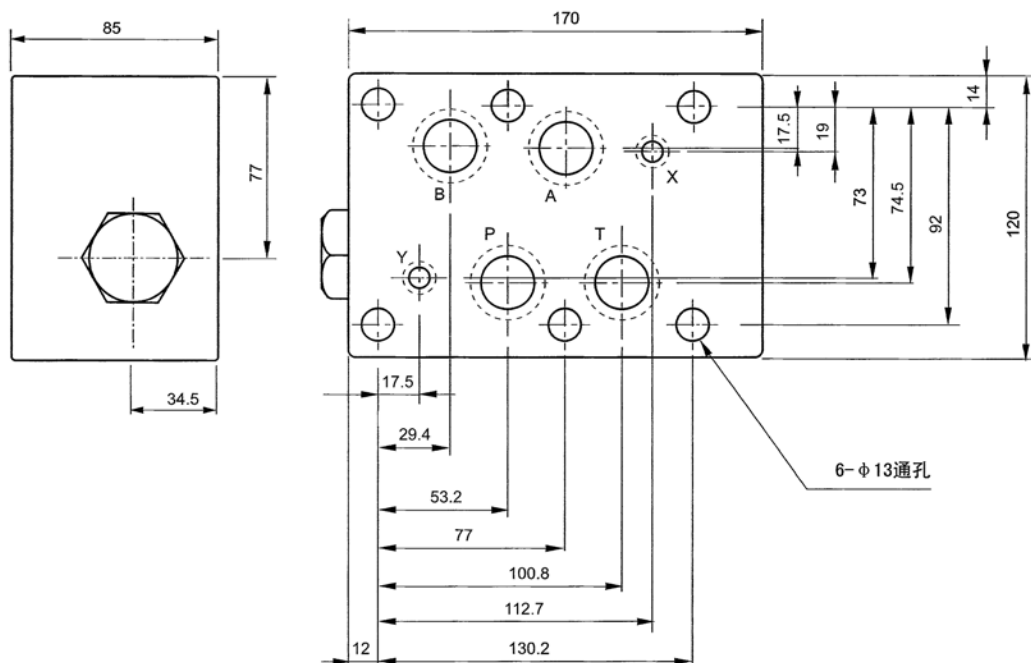


■ 尺寸圖

**MCP-04**



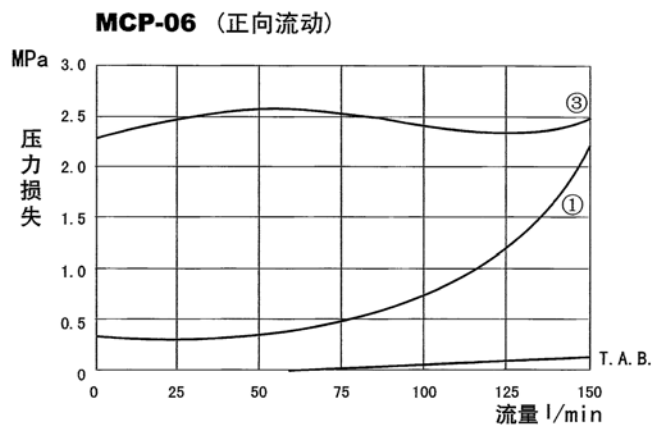
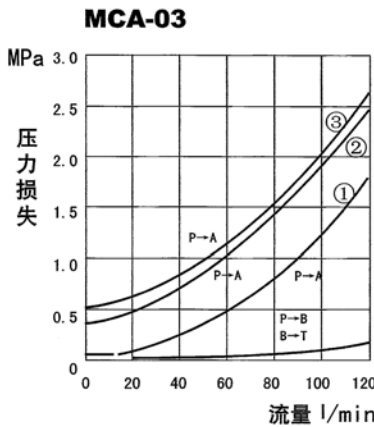
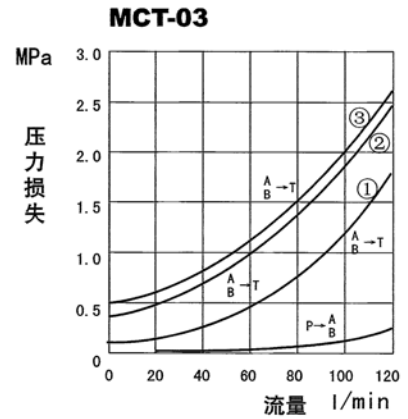
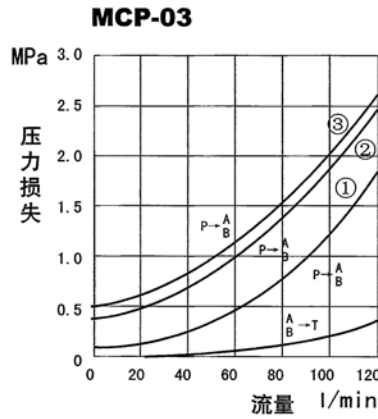
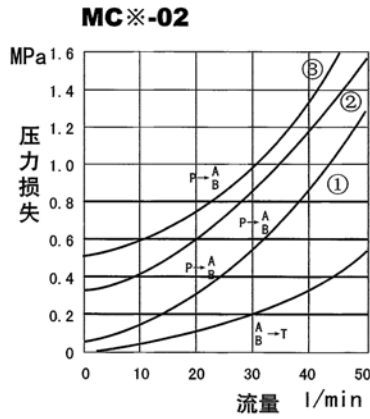
**MC※-06**



性能曲線

测试条件: 油粘度:32 cSt 油温:50°C 油:ISO-VG32 比重:0.850

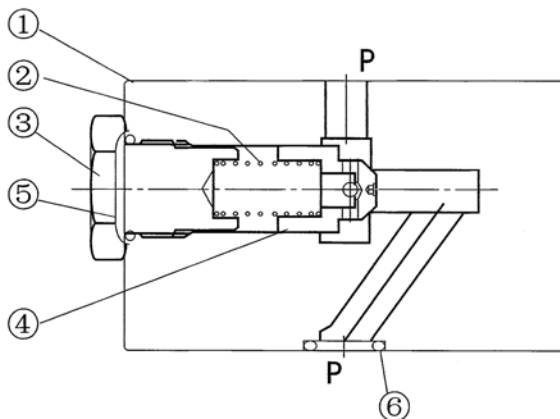
A. 压力-流量特性



备注: ①:开启压力=0.05 MPa, ②:开启压力=0.35 MPa, ③:开启压力=0.46 MPa。

剖面圖

MC\*-03



编号	零件名称	数量
1	阀体	1
2	弹簧	1
3	堵头	1
4	阀芯	1
5	O形圈-1	1
6	O形圈-2	5

此圖為 MC\*-03 剖面圖, 與 MC\*-02 及 MC\*-06 零件尺寸稍異, 但部分名稱仍相同, 若遇更換零件, 請依此圖洽福歐公司技術部。